



www.geoplast.it

GEOTUB[®]

SQUARE & RECTANGULAR

GEOTUB[®] The first modular plastic formwork

The first modular plastic formwork for square and rectangular columns, reusable for many pours. Light and handy, GEOTUB[®] Panel can be used for any project. Thanks to its size range - a height of 75 cm and a width from 20 to 60 cm - it is possible to obtain up to 45 different combinations of size and shape. No more timber or steel panels but a single light formwork, fast to assemble and easy to cleanse.



Supplied by



RIGHT PRODUCT
RIGHT PRICE
RIGHT TO YOUR SITE



09 42 68 101

sales@everitts.co.nz

www.everitts.co.nz

GEOTUB® PANEL ADVANTAGES

REUSAGES

GEOTUB® PANEL is cost-competitive as it can be used for an average of 100 pours. As concrete does not stick to plastic, cleaning of the formworks is done using just some water: the use of detergents and releasing agents is not necessary.

**100
USAGES**

INSTALLATION AND REMOVAL

Erecting and dismantling are easy and fast operations thanks to the special handles that lock with a simple 90 degree turn.

MODULARITY

GEOTUB® PANEL is a modular element of 75 cm height: it does not need to be cut to length as only the amount of panels required for the pour is used.

STORAGE

GEOTUB® PANEL can be completely disassembled and does not need to be stored in a dry environment.

HANDLING ON SITE

Thanks to their small size and weight, the panels can be easily handled in the construction site, and can be swiftly assembled where required.

RESULTS

The surface of columns poured with **GEOTUB® PANEL** can be left in sight without any further rework.

SETTING-UP

The single elements are joined using high-strength nylon handles. The set-up operation is very quick as the fast-lock nylon handles firmly join the forms with a simple 90 degree turn.

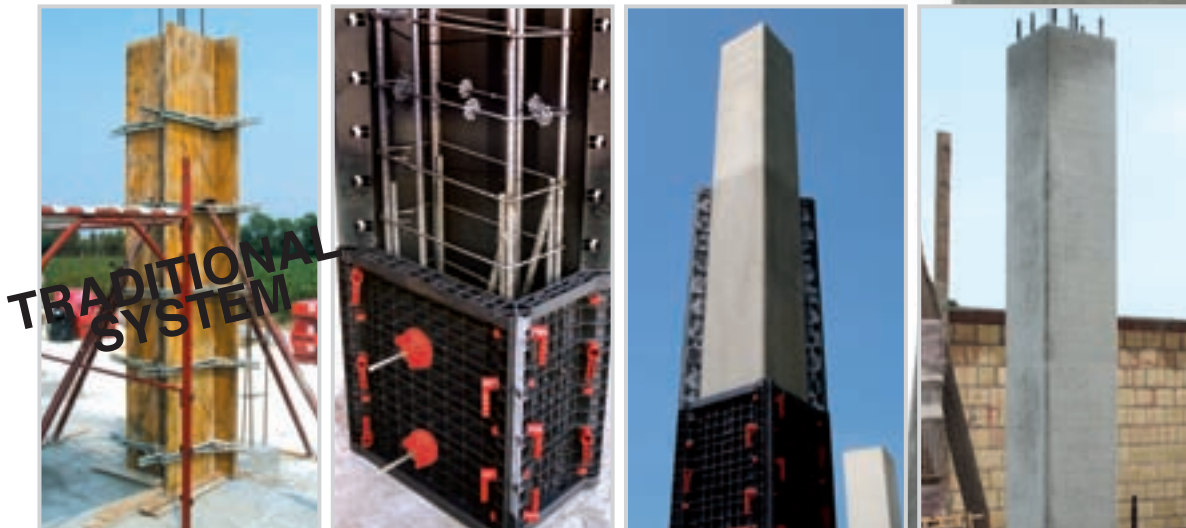


GEOTUB® PANEL COMPARISON



THE INTELLIGENT ALTERNATIVE TO TRADITIONAL SYSTEMS

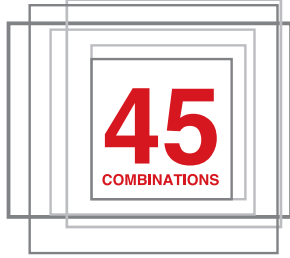
| FEATURES | TRADITIONAL SYSTEMS | GEOTUB® PANEL |
|------------------------------|---------------------------------------|----------------------------------------------------------------------|
| Bulk | | Modular, with a standard length of 75 cm |
| Impermeability | 10% | 100% |
| Stoccaggio | Must be stored in a dry environment | Does not require any special storage conditions |
| Typical lifetime | Limited | 100 times average |
| Adherence of concrete | Releasing agents are necessary | GEOTUB® Panel is a plastic formwork, concrete does not stick to it |
| Protection | | The best protection of the pillars until the end of the job |
| Plumbing | Time consuming and not always precise | Fast and precise plumb, the external structure allows easy anchorage |
| Releasing agents | Necessary | Not required |



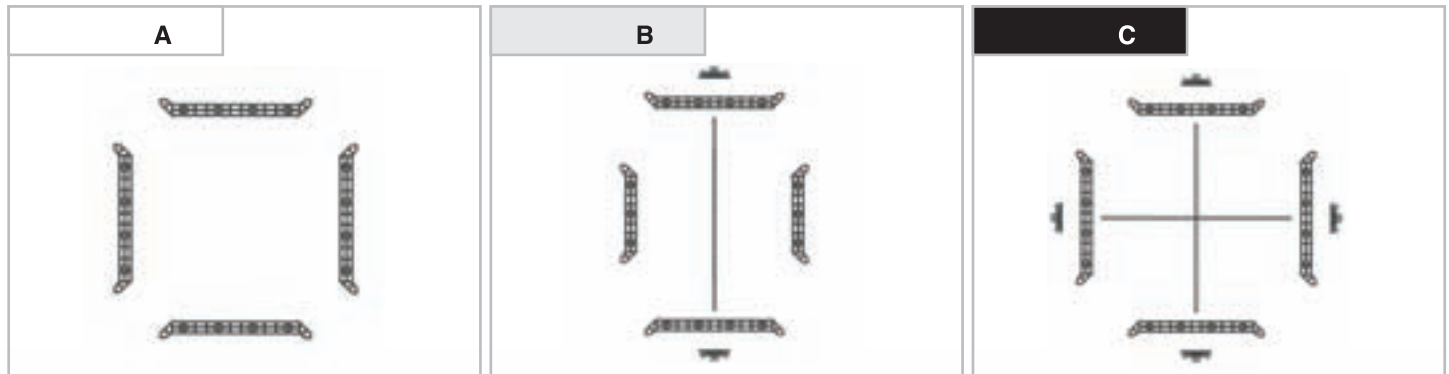
GEOTUB® PANEL DIFFERENT COMBINATIONS

VERSATILE AND MODULAR GEOTUB® PANEL

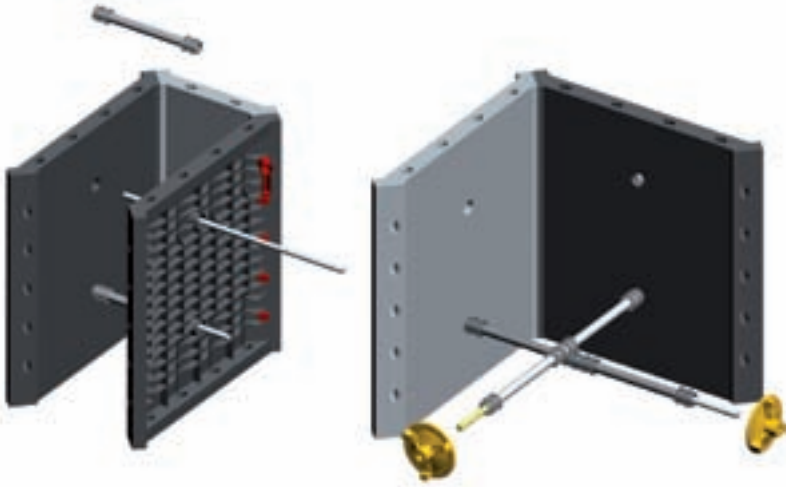
| DIMENSION | 20 | 25 | 30 | 35 | 40 | 45 | 50 | 55 | 60 |
|-----------|-------|-------|-------|-------|-------|-------|--------------|--------------|--------------|
| 20 | 20x20 | 20x25 | 20x30 | 20x35 | 20x40 | 20x45 | 20x50 | 20x55 | 20x60 |
| 25 | | 25x25 | 25x30 | 25x35 | 25x40 | 25x45 | 25x50 | 25x55 | 25x60 |
| 30 | | | 30x30 | 30x35 | 30x40 | 30x45 | 30x50 | 30x55 | 30x60 |
| 35 | | | | 35x35 | 35x40 | 35x45 | 35x50 | 35x55 | 35x60 |
| 40 | | | | | 40x40 | 40x45 | 40x50 | 40x55 | 40x60 |
| 45 | | | | | | 45x45 | 45x50 | 45x55 | 45x60 |
| 50 | | | | | | | 50x50 | 50x55 | 50x60 |
| 55 | | | | | | | | 55x55 | 55x60 |
| 60 | | | | | | | | | 60x60 |



| | |
|----------|-----------------------------------------------------------------------------------------------------------|
| A | H 3 meters = 16 GEOTUB® PANEL (8+8 and handles) |
| B | H 3 meters = 16 GEOTUB® PANEL (8+8 and handles) + 6 tie-rods (1m) + 12 washers + 12 spacers + 16 caps |
| C | H 3 meters = 16 GEOTUB® PANEL (8+8 and handles) + 12 tie-rods (1m) + 24 washers + 24 spacers + 32 caps |



ACCESSORIES CASE B and C



SPACER
15 - 20 - 25 - 30 - 35 - 40
MATERIAL: HD PE
WEIGHT: 0.08 kg



CAP
for spacing bar
MATERIAL: HD PE
WEIGHT: 0.006 kg



TIE-ROD \varnothing 17
MATERIAL: Steel
WEIGHT: 1 kg



WASHER
for tie-rod
MATERIAL: Nylon + Steel
WEIGHT: 0.4 kg



SETUP

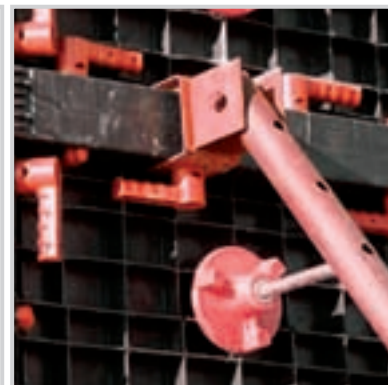
Erection is very quick as the fast-lock nylon handles firmly join the forms with a simple 90-degree turn.



GEOTUB® PANEL

PLUMB

To plumb **GEOTUB® PANEL** simply lean steel props on the formwork ribbing, or use the steel double joint and standard handles.



GEOTUB® PANEL

The system is very light, practical and can be handled by a single person.

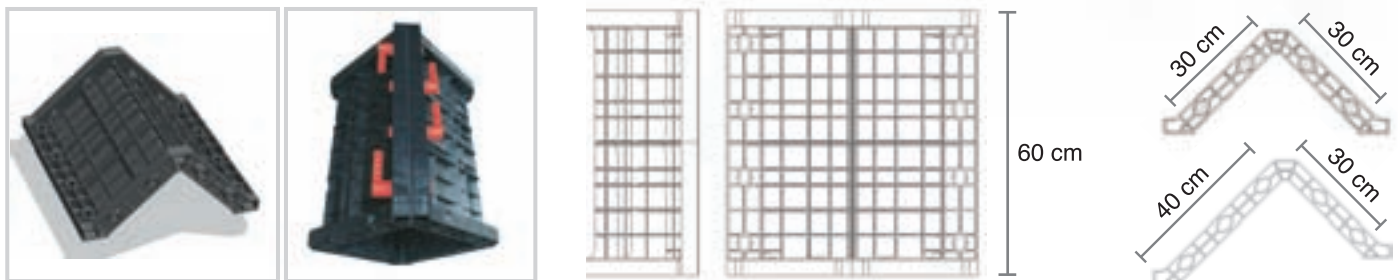


GEOTUB® 30x30 _ 30x40

GEOTUB® 30X30 & 30X40 includes all the advantages of GEOTUB® Panel, and its L-shaped elements increase the speed of execution in case many columns of the same size are to be poured.
 GEOTUB® 30X30 & 30X40 is available in two sizes: 30x30 cm (square) and 30x40 cm (rectangular); each modular element is 60 cm high.

TECHNICAL DATASHEET GEOTUB® 30X30 - 30X40

| | |
|---------------------------------------|----------------------------------------------|
| MATERIAL | ABS |
| INNER SQUARE FORMWORK DIMENSIONS | 30 cm x 30 cm |
| INNER RECTANGULAR FORMWORK DIMENSIONS | 30 cm x 40 cm |
| SINGLE FORMWORK LENGTH | 60 cm |
| MAXIMUM PILLAR HEIGHT | 3 m |
| PACKING OF THE SQUARE FORMWORK | Pallet size 121 x 115 x h 240 cm |
| PACKING OF THE RECTANGULAR FORMWORK | Pallet size 130 x 121 x h 247 cm |
| QUANTITY / PALLET GEOTUB® SQUARE | 90 pcs. GEOTUB® Square + 648 handles |
| QUANTITY / PALLET GEOTUB® RECTANGULAR | 90 pcs. of GEOTUB® Rectangular + 720 handles |



Example: to set up a column 3 m high, 10 GEOTUB® Square elements + 72 handles are required. The installation time is 5 minutes, propping excluded. GEOTUB® Rectangular requires 80 handles for a 3 m high column.

CALCULATE THE NO. OF HANDLES TO SET UP YOUR COLUMN

30x30 [No. GEOTUB® 30X30 x 8 (handles)] - 8 (handles)

30x40 [No. GEOTUB® 30X40 x 9 (handles)] - 10 (handles)



GEOTUB® PANEL TECHNICAL PROPERTIES

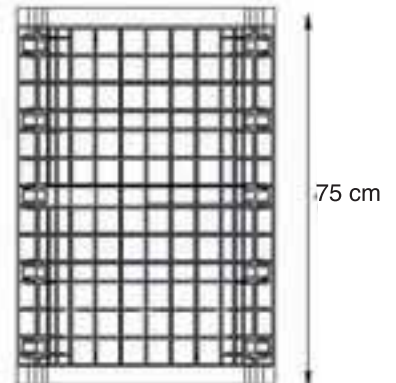
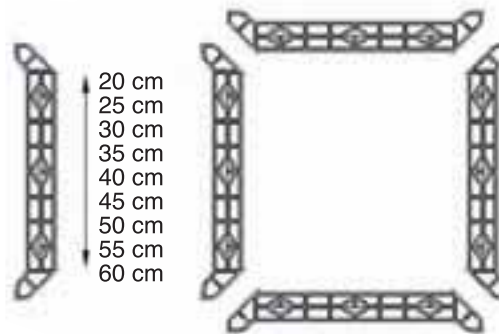
GEOTUB® PANEL TECHNICAL DATASHEET

| | |
|------------------------------|-----------------|
| MATERIAL | ABS |
| CHAMFER | 1 cm at 45 deg. |
| DIMENSIONS, PER PANEL | |
| GEOTUB® PANEL 20 | 20 cm x H 75 cm |
| GEOTUB® PANEL 25 | 25 cm x H 75 cm |
| GEOTUB® PANEL 30 | 30 cm x H 75 cm |
| GEOTUB® PANEL 35 | 35 cm x H 75 cm |
| GEOTUB® PANEL 40 | 40 cm x H 75 cm |
| GEOTUB® PANEL 45 | 45 cm x H 75 cm |
| GEOTUB® PANEL 50 | 50 cm x H 75 cm |
| GEOTUB® PANEL 55 | 55 cm x H 75 cm |
| GEOTUB® PANEL 60 | 60 cm x H 75 cm |



REV. 15/10/07 www.librecora.com

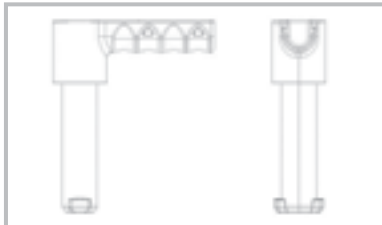
MAXIMUM COLUMN HEIGHT = 3 m



NO. OF HANDLES PER GEOTUB® PANEL ELEMENT

| GEOTUB® PANEL | 20 | 25 | 30 | 35 | 40 | 45 | 50 | 55 | 60 |
|---------------|----|----|----|----|----|----|----|----|----|
| No. HANDLES | 6 | 7 | 7 | 8 | 8 | 8 | 9 | 9 | 9 |

Example: a 3 meter high **GEOTUB®** PANEL 40X40 column requires 16 **GEOTUB®** PANEL elements and 128 handles. The erection time is 10 minutes, propping excluded.



HANDLE MATERIAL

UV-STABLE NYLON

ASSEMBLY HANDBOOK AND TECHNICAL SPECIFICATIONS

Available in our website www.geoplast.it in the "Documents and Data" section.

Supplied by



RIGHT PRODUCT
RIGHT PRICE
RIGHT TO YOUR SITE



09 42 68 101

sales@everitts.co.nz

www.everitts.co.nz